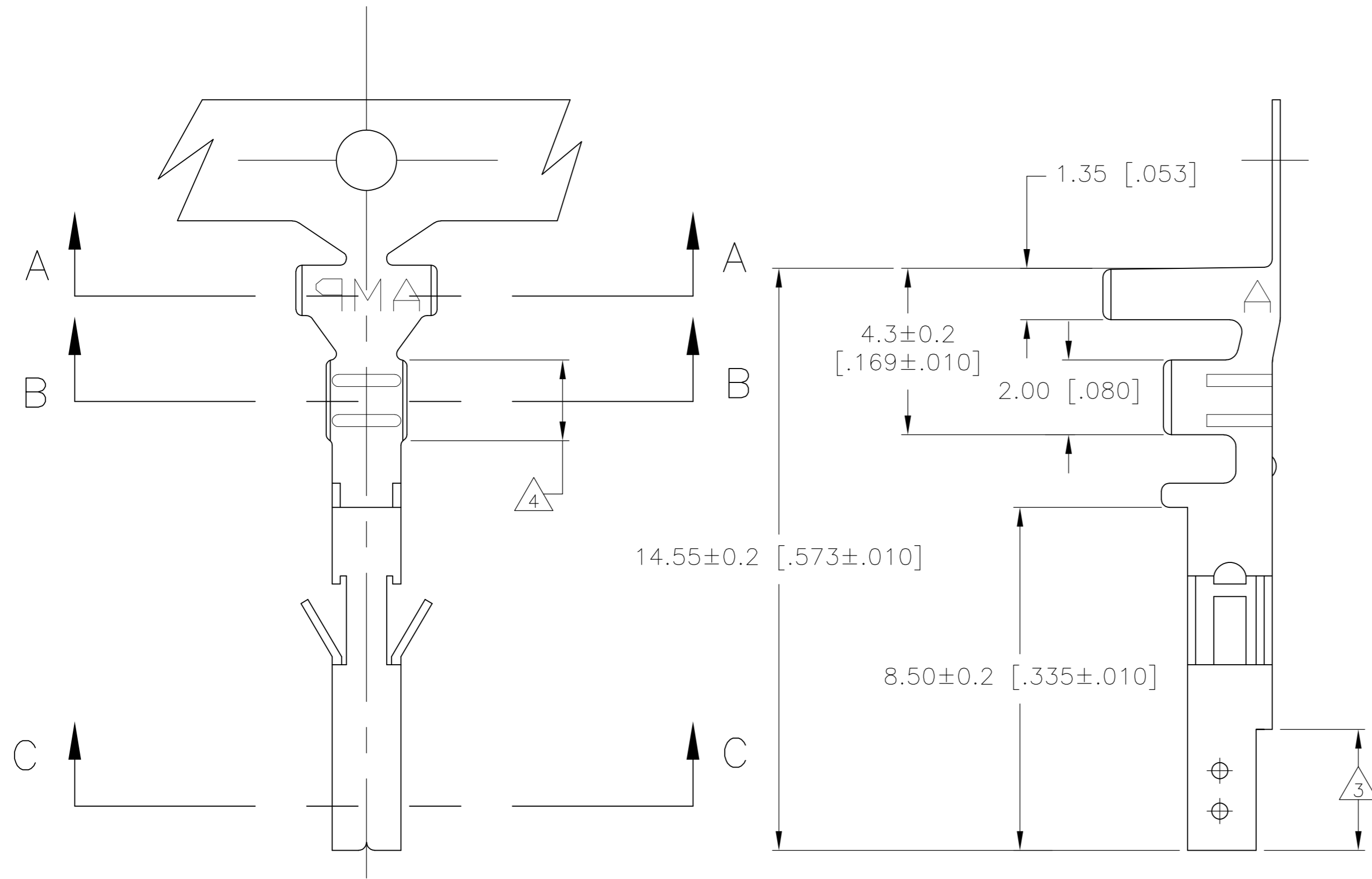
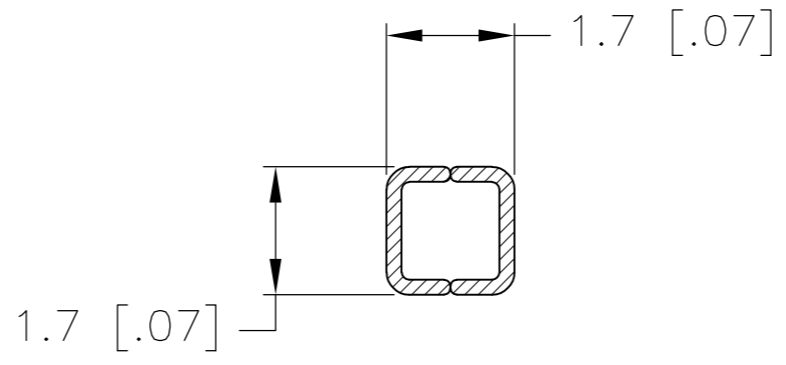
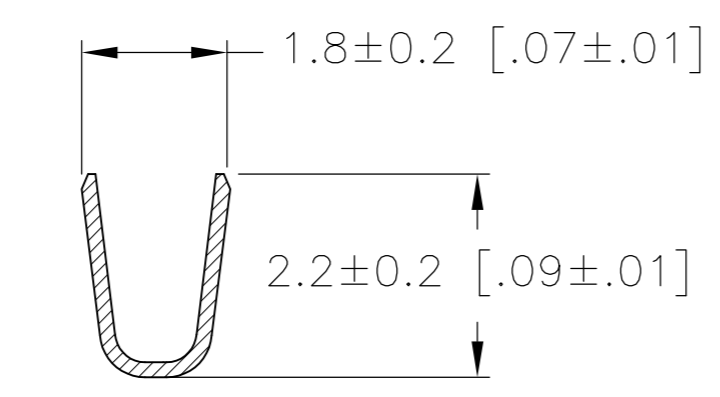
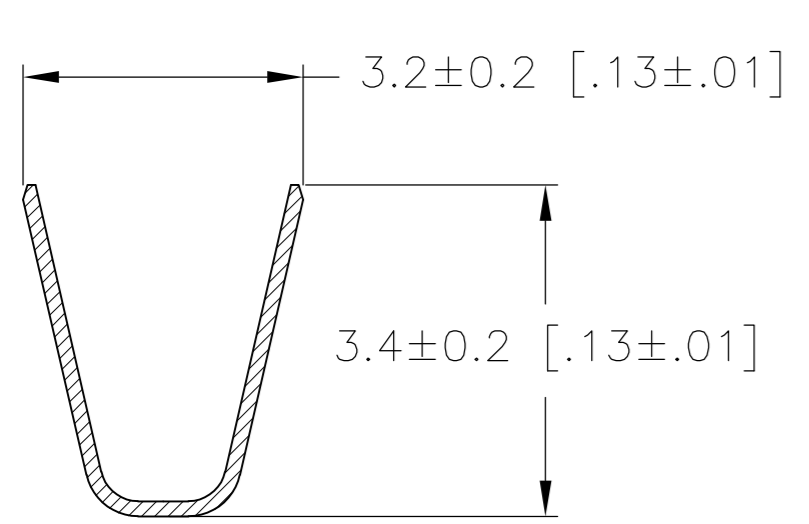


THIS DRAWING IS UNPUBLISHED. RELEASED FOR PUBLICATION  
 © COPYRIGHT - By - ALL RIGHTS RESERVED.

LOC		DIST		REVISIONS			
P	LTR	DESCRIPTION		DATE	DWN	APVD	
CM	00	F4	REVISED PER ECO-11-004820		11MAR11	RK	HMR



- 1 WIRE RANGE: 0.13–0.32mm<sup>2</sup> (26–22 AWG).
- 2 INSULATION RANGE: 1.20–1.75 DIA.
- 3 FINISH: 0.76 MIN GOLD OVER 1.27μm MIN NICKEL REQUIRED ON INNER SURFACE, PERMITTED ON OUTER SURFACE.
- 4 FINISH: 2.54μm MIN PRE-TIN ON ALL SURFACES IN THIS AREA.
- 5 FINISH: 2.54μm MINIMUM PRE-TIN ALL OVER.



SECTION B-B

SECTION C-C

SECTION A-A

GOLD	3 4	PHOS. BRZ.	794958-4
PRE-TIN	5	PHOS. BRZ.	794958-3
GOLD	3 4	BRASS	794958-2
PRE-TIN	5	BRASS	794958-1
FINISH:		MATERIAL:	PART NO.

THIS DRAWING IS A CONTROLLED DOCUMENT.		DWN	S. HAMM	10-SEP-2001								
DIMENSIONS: mm [INCHES]		CHK	D. COLEY	10-SEP-2001								
TOLERANCES UNLESS OTHERWISE SPECIFIED:		APVD	D. COLEY	10-SEP-2001								
0 PLC ± 1 PLC ± 0.15 [.006] 2 PLC ± 0.10 [.004] 3 PLC ± 0.050 [.0020] 4 PLC ± ANGLES ±		PRODUCT SPEC	NAME									
MATERIAL		APPLICATION SPEC	TERMINAL SOCKET VAL-U-LOK(TM)		RESTRICTED TO							
FINISH		WEIGHT	SIZE	A2	CAGE CODE	00779	DRAWING NO	C=794958	SHEET	1 OF 1	REV	F4
CUSTOMER DRAWING		SCALE		10:1	SHEET		1 OF 1	REV		F4		

METRIC